

# ROULEAU AUCTION

**Selling 32.69 +/- Acre Farmstead with 3 Bedroom Stone Home with Several Outbuildings  
& Bordered by Deer Creek, Antiques & Collectibles and MUCH MORE!!**

**SATURDAY, SEPTEMBER 20th, 2025 - 10:00 A.M.**

**AUCTION LOCATION: From Phillipsburg, Kansas - Approx. 10 Miles West on Hwy 36  
to Osage Road then Approx. 2½ Mile West of the Stuttgart Trinity Cemetery**

**LUNCH STAND PROVIDED**

**WATCH FOR SIGNS**

**WE'LL BE RUNNING 2 RINGS SO COME PREPARED**

**Many More Pictures at [www.hamitauction.com](http://www.hamitauction.com)**

**BID LIVE IN PERSON OR ONLINE ON REAL ESTATE  
FIREARMS, VEHICLES, MOTORCYCLES & TRACTORS**

**go to [hamitauction.com](http://hamitauction.com) to register to bid online**

**REAL ESTATE: SELLS AT 1:30 P.M.**

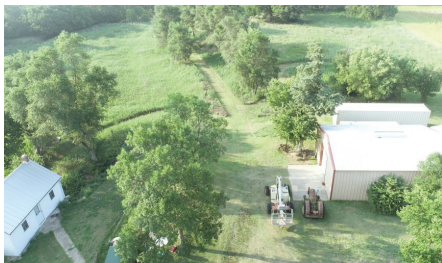
**OPEN HOUSE SUNDAY, AUGUST 31, 2025 - 1:30P.M.**

**Your Private 32-Acre Retreat Awaits at 863 W. Osage Rd. Prairie View, Kansas**



Tucked away on 32.69 secluded acres, this one-of-a-kind property offers the peace, privacy, and natural beauty you've been searching for. The charming 4-bedroom, 1-bath native stone home exudes rustic character, with a partial basement and a standing seam metal roof less than three years old. For the hobbyist, homesteader, or collector, the property boasts an impressive array of outbuildings: a 20' x 30' workshop with a 10' x 10' overhead door, a 4-car garage with roll-up doors, a massive 70' x 54' barn, a large carport, a chicken house, and more. Nature lovers will appreciate the lush, wooded landscape filled with

white oak, ash, and a variety of other hardwoods. And as a finishing touch, the north boundary is graced by tranquil Deer Creek—half of which flows right through your property—perfect for peaceful walks, wildlife watching, or simply unwinding by the water. Whether you're dreaming of a working farm, a weekend getaway, or your forever home in the country, this property offers endless possibilities in a truly idyllic setting.





**FIREARMS AND RELATED ITEMS:** - Stevens 22, Visible Loading Repeating Rifle, Pump SN780 - Marlin Model 1892, 32 Cal?, Lever Action, Octagon Barrel Sn 85650 - Savage Arms Model 24, 410/22LR Over & Under SN Unknown - Marlin Model 1893, 34-40, Lever Action SN112786 - Stevens Marksman 22 LR SS, SN 232 - Spencer 50Cal, Pt 1860, Rare Emblem on Stock, Rolling Block, SN5551 - Sharps & Hawkins 50 Cal. Pat 1859, SN2466 - Remington 1888 Rolling Block - Sharps Pat 1852, SN46008 - Ballard 38Cal Long Colt, Octagon, SN 7583 - Winchester Model 59, Semi Auto 12 Ga. 2 3/4, Sn 32418 - Hopkins & Allen SS Trap Door 12Ga, SN 9572 - Winchester 1897 12 Ga, Pump, (White Gun) SN 232682 - Winchester Model 12, 12Ga, Pump, 2 3/4in SN 871444 - 879916 - J Stevens Walnut Hill 22 LR, Breech Loader, SN2554 - FR. Schafhausen, Hilbefheim JGA 6MM, Flob SS Riffel, SN 354822 - Winchester Model 94, 30-30, Lever Action, SN 4910535 W/Box - Hpiiper Flobert Belgium, 22 Ca. Rifle, ISN 322 - Ithica Model 500 20 Ga., 3in, Over and Under SN S6504539 - Marlin Model 97, 22Cal, Lever Action SN301210 - Springfield Model 1878 Trapdoor 45-70, SN 242896 - Remington Target Master, 22 S,L, LR, Bolt Action, SN -Unknown - Lee Enfield No. Mark 4, 22cal Training Rifle, SN 806 - Norinco SKS, 760X39, SN C21001912 - Thompson Center 45 Cal., Black Powder, SN16978 - Sargent Muzzle Loader, SN -Unknown - Laminated Steel Barrel, Dbl Barrel - J Stevens 22 Cal Break Action Pistol W/ Holster - H&R Victor 38 Cal Revolver Pistol, SN 56378 - Remington



Army 1858 Revolver, 44 Cal., SN - Euroarms Army Replica, W/ Holster - A&AS Solinger German Pin Fire Revolver - FMJ Co-bray 45 Cal Deringer Less Breech Face - Intratec TEC 22 Scorpion, 082624 - Broom Handle Mauser Pistol SN 201446 - Madison Imperial Company 1779, Flintlock - Jukar Percussion Cap Black Powder SN 0012327 - Myersburg & Stamm German Sword - Possible Bag W/Items for Muzzle Loader & Thompson Center 45 Cal and Other Misc. Items.

**TOOLS** - 1898 Anvil, Ryobi 6" Bench Grinder, Ryobi Sander, Ryobi Drill Press, Abrasive Blaster, Shop Vacuums, Delta Track Arm Saw, Stihl-McCulloch-Homelite Chain Saw, De-walt Saw, Makita Miter Saw, Bench Saw, Troy-Bilt Weed Eater, Stihl Tree Trimmer, Floor Jack, Coleman Powermate, Portable Tire Changer, Miller Thunder Bolt 225V Welder, Lincoln Weld-Pak 100, Black Max Generator, Battery Charger, Extension Cords, Welding Helmet, Screwdrivers-Wrenches-Pliers-Hammers-Socket Sets, Motor Lift, Tow Chains, Zero Turn Law Mower Lift, Hand Tools Shovel-Hay Pick-Trimmers & More



**TRACTORS, TRAILERS & EQUIPMENT** - John Deere Model D, Restored, Sn139944 - John Deere A, Restored. Sn 591422 - 1938 John Deere Model B On Lugs, SN56572- Massey 44 Special Tractor SN44G6155 50393 - John Deere 4010 Diesel, SN01021T12456- JLG 40 HA Tele Lift W/Man Basket - Case 580B W/Backhoe & Loader Sn 5233309 - 2001 CM 8x24 Enclosed Car Trailer - Doolittle T-7716 Trailer, New - 1959 GMC Grain Truck -







**VEHICLES** – 2018 Ram 2500 4X4 Pickup, Crew Cab, Cummins Turbo Diesel, 206500 Miles -1929 Model A “Blind Back” restored, 88,946 Miles, - 1950 Olds 88 Futuramic Restored by Ron Kester at Ron’s Restorations – 1978 Cobra 427 Style Everett-Morrison Kit Car, Ford Mustang Front End, ENGINE 302 Cid. Built by Statkus Engineering Albuquerque New Mexico, High Compression Pop Up Forged Pistons, Engine Balanced, Iskenderian Camshaft, Lopes on Idle, Roller Rockers, Comp Cam Lifters, Rods Shot-Peened, Ford Top Loader Trans, Rebuilt to Specs, Ford 9” from Lincoln Continental with Disc Brakes, Dot 5 Brake Fluid K: by Ron Kester (Ron’s Restorations) Glade, Kansas (ONLY 2 ORIGINAL MILES) – 1917 Chalmers Roadster W/ 3,200 miles - 2003 Corvette ZO6, 50,207 miles – 1929 Model A Pickup, Restored, 50,458 Miles - 1952 MG Roadster, Restored, 66,893 Miles – 2006 Porche Cayenne SUV – 1972 Porche 914, – 1997 BMW UZ8 – 1926 Model T



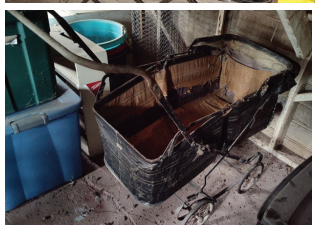
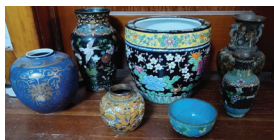
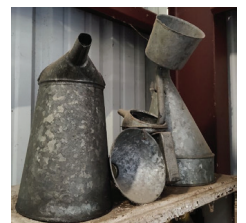
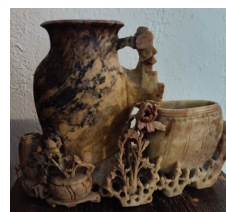
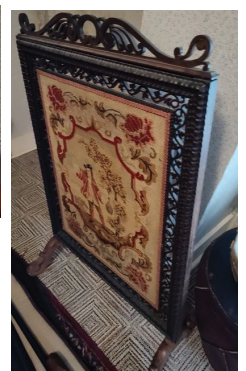


**ATV, MOTORCYCLES, SCOOTERS & BOATS** – 2010 RZR4 Polaris 800 Robby Gordon Off Road - Polaris Sportsman 400 4 Wheeler, 5,033 Miles - 2008 Harley Sportster, 883cc, 2,828 Miles - 2007 Harley Sportster 883cc 2,731 Miles - 2007 Kawasaki KLR650, 5,752 Miles - 2009 Blue Yamaha WR450FX Dirt bike - 1978 Yamaha SR500E-R, 5,755 Miles - 2009 Yamaha XF50C3 Scooter 3,766 Miles - 2010 Yamaha Model XF50 CS Scooter 1,037 Miles - 2012 Yamaha YW50FBL, 1,626 Miles - 2004 Red Honda CRF230F Dirt Bike - 1978 Yamaha 500, 5,755 Miles - 1980 BMW R100T, 16,267 Miles - Pacific Coast Cycle, 20,579 Miles - Zuma Scooter - Racing Go Cart





**ANTIQUE & VINTAGE COLLECTIBLES** - Large Collection of Cast Iron, Dual Retractable Double Shade Kerosine Lantern, Hand Stitched Quilts, Wool Trade Blanket, Oil Lamps, Handmade Crochet & Cross-stitch Fancy Ware Items, Childs Tea Set, Perfume Bottles, Shaving Kit, Crystal & Cut Glasses Vases-Bowls-Serving Pieces & Basket, GE Halfmoon Mantel Clock, Doll Bed - Head Vase, Monkey Wood Bowls, Cookie Cutters, Starr Coca-Cola Opener, Coffee Tin, Red & Green Wood Handle Kitchen Utensils, Food Chopper, Fur Coat, American West Double Holster Set, Gilbert American Flyer Train Set, Erector Set in Metal Case, Sterling Silver Plater-Glass & Silver Sorbet Dishes-Trinket Dish-Creamer & Sugar-Vases and more, Firestone Tire Store Portis, KS, Cloisonne Vases, Hand Cut Marble Vase, Beaded Purse, France Dessert China Sets, Hand Painted Porcelain Vases, Box Camera, Meat Grinders, Tea Ball Collection, Kirch Chef Wall Clock, Stainless Steel Kitchen Towel Holder, Cobalt Blue Juicer with Measuring Cup, Crock Bowls, Axe Sharpener, 1904 Tin Pie Safe, 5 Gal Crock, Oil Can, Metal Wagon Wheels, Victorian Fireplace Screen, Tom's Glass Peanut Butter Sandwiches Jar, Enamel Chamber Pot, Fan, Coca-Cola Bottle Crate, Framed Stain Glass, Goodrich Tires-Double Sides Conoco Gasoline, Camelback and Flat Trunk



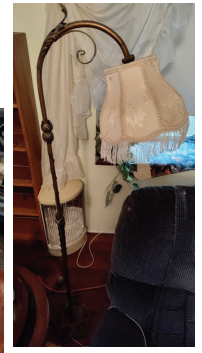
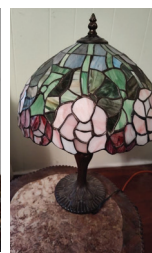
**FURNITURE** - Antique Side Board/Bufett, Drop Leaf Table with Chairs, Albion Heater, Cross Stitched Wooden Chairs-Rocker, Wood Drop Leaf Serving Cart, China Hutch, Antique Wash Stands, Ornate Wood Desk, Kitchen Step Chair, Metal Stool, Roll Top Desk, Floor Lamps-Side Lamps, Mission Style Wood Chair, Mission Style Wood Coat Stand, Antique Wood Wardrobe, Metal Day Bed, Civil War Cast Iron Bed







**OTHER** - Janome Professional Memory Craft 6600 Sewing Machine, Treadle Sewing Machine, Full Cowhide Leather, Conn Acoustical Guitar, Large Microscope, Framed Horse Art, Framed Signed & Number Bear Art, Enameled Cast Iron Cookware, Cast Iron Gate, Bird Bath, Trumpet, Violin, RC Planes (some new in box), Hot Wheels Batmobile Transporter NIB, Highboy 5 Drawer Dresser, Parlor Tables, Claw & Ball Piano Stool, Vintage Metal Folding Chairs, Outdoor Metal Chairs, Car Luggage Rack, Ramps, Dome Tent, Bicycles, Double Yoke, Fiest Grills,



**MANY OTHER ITEMS TOO NUMEROUS TO MENTION!**

**FOR MORE INFORMATION CONTACT  
DAVID ROULEAU 575-740-0974**

**TERMS & CONDITIONS:** Cash – Approved Check W/Positive ID – Credit Cards Accepted: Visa & Master Card – There will be a 4% Administrative Charge on All Credit Card Purchases – All Items Will be Sold “As-Is Where-Is” – Not Responsible for Accidents – Announcements Made Day of Sale Take Precedence Over Printed Material

**MUST HAVE DRIVERS LICENSE OR POSITIVE PHOTO ID  
TO REGISTER FOR BIDDER NUMBER**

## Hamit Land & Auction, Inc.

**Don Hamit - Broker  
Auctioneer  
Cell 785-425-8123**

**Stockton Office - 785-425-6585  
Russell Office - 785-483-7777  
Hays Office - 785-621-4101**

**www.hamitauction.com**

**Farm & Ranches  
Farm Equipment  
Antiques - Estates  
Residential  
Commercial**

**NAA  
Auctioneer**

**Kansas  
Auctioneer**